

Discharge Measurement Summary

Site name WCanal7
Site number 02
Operator(s) VAllen
File name WestCanal_20230614_0907.ft
Comment

Start time	6/14/2023 9:07 AM	Sensor type	Top Setting
End time	6/14/2023 10:21 AM	Handheld serial number	FT2H2219029
Start location latitude	42.810	Probe serial number	FT2P2219014
Start location longitude	-118.871	Probe firmware	1.30
Calculations engine	FlowTracker2	Handheld software	1.7

# Stations	Avg interval (s)	Total discharge (m³/s)
28	40	0.7343

Total width (m)	Total area (m²)	Wetted Perimeter (m)
5.151	3.14899	5.667

Mean SNR (dB)	Mean depth (m)	Mean velocity (m/s)
52	0.611	0.2332

Mean temp (°C)	Max depth (m)	Max velocity (m/s)
10.355	0.823	0.3534

Discharge Uncertainty		
Category	ISO	IVE
Accuracy	1.0%	1.0%
Depth	0.1%	0.9%
Velocity	0.2%	2.7%
Width	0.1%	0.1%
Method	0.8%	
# Stations	1.8%	
Overall	2.2%	3.0%

Discharge equation	Mid Section
Discharge uncertainty	IVE
Discharge reference	Rated

Data Collection Settings	
Salinity	0.000 PSS-78
Temperature	-
Sound speed	-
Mounting correction	0.000 %

Summary overview

No changes were made to this file
Quality control warnings



Discharge Measurement Summary

Site name WCanal7
Site number 02
Operator(s) VAllen
File name WestCanal_20230614_0907.ft
Comment

Station Warning Settings

Station discharge OK

Station discharge < 5.00%

Station discharge caution

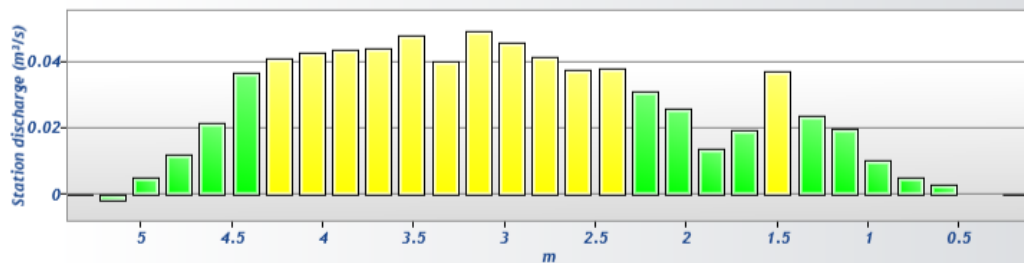
5.00% >= Station discharge < 10.00%

Station discharge warning

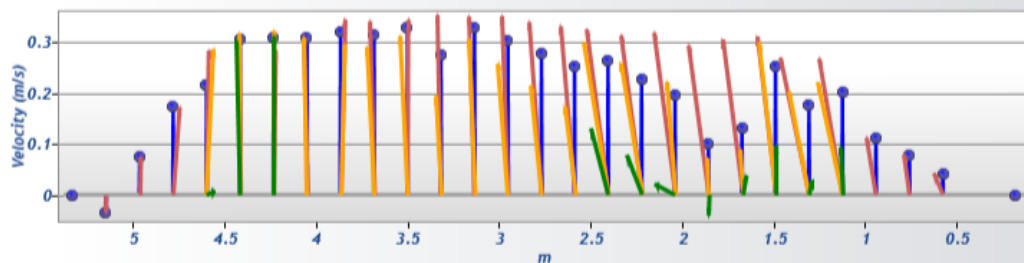
Station discharge >= 10.00%



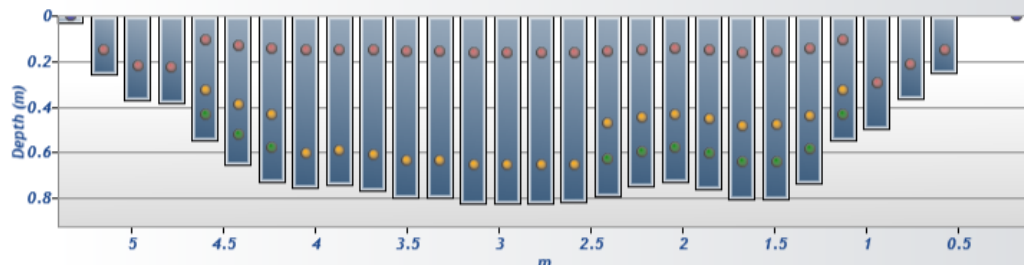
Discharge chart

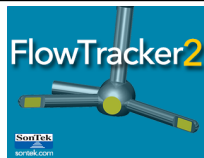


Velocity chart



Depth chart

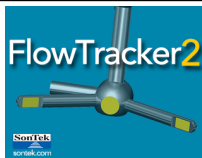




Discharge Measurement Summary

Site name WCanal7
Site number 02
Operator(s) VAllen
File name WestCanal_20230614_0907.ft
Comment

Measurement results														
St#	Time	Location (m)	Method	Depth (m)	%Depth	Measured Depth (m)	Samples	Velocity (m/s)	Correction	Mean Velocity (m/s)	Area (m ²)	Flow (m ³ /s)	%Q	
0	9:07 AM	0.183	None	0.000	0.0000	0.000	0	0.0000	1.0000	0.0422	0.00000	0.0000	0.00	✓
1	9:07 AM	0.579	0.6	0.247	0.6000	0.148	80	0.0422	1.0000	0.0422	0.07149	0.0030	0.41	✓
2	9:11 AM	0.762	0.6	0.360	0.6000	0.216	80	0.0795	1.0000	0.0795	0.06578	0.0052	0.71	✓
3	9:12 AM	0.945	0.6	0.494	0.6000	0.296	80	0.1125	1.0000	0.1125	0.09030	0.0102	1.38	✓
4	9:14 AM	1.128	0.2/0.6/0.8	0.543	0.2000	0.109	80	0.2678	1.0000	0.2016	0.09922	0.0200	2.72	✓
4	9:14 AM	1.128	0.2/0.6/0.8	0.543	0.6000	0.326	80	0.2220	1.0000	0.2016	0.09922	0.0200	2.72	✓
4	9:14 AM	1.128	0.2/0.6/0.8	0.543	0.8000	0.434	80	0.0945	1.0000	0.2016	0.09922	0.0200	2.72	✓
5	9:18 AM	1.311	0.2/0.6/0.8	0.732	0.2000	0.146	80	0.2701	1.0000	0.1766	0.13378	0.0236	3.22	✓
5	9:18 AM	1.311	0.2/0.6/0.8	0.732	0.6000	0.439	80	0.2033	1.0000	0.1766	0.13378	0.0236	3.22	✓
5	9:18 AM	1.311	0.2/0.6/0.8	0.732	0.8000	0.585	80	0.0297	1.0000	0.1766	0.13378	0.0236	3.22	✓
6	9:21 AM	1.494	0.2/0.6/0.8	0.802	0.2000	0.160	80	0.3114	1.0000	0.2519	0.14660	0.0369	5.03	✓
6	9:21 AM	1.494	0.2/0.6/0.8	0.802	0.6000	0.481	80	0.2995	1.0000	0.2519	0.14660	0.0369	5.03	✓
6	9:21 AM	1.494	0.2/0.6/0.8	0.802	0.8000	0.641	80	0.0973	1.0000	0.2519	0.14660	0.0369	5.03	✓
7	9:25 AM	1.676	0.2/0.6/0.8	0.805	0.2000	0.161	80	0.3055	1.0000	0.1310	0.14716	0.0193	2.63	✓
7	9:25 AM	1.676	0.2/0.6/0.8	0.805	0.6000	0.483	80	0.0900	1.0000	0.1310	0.14716	0.0193	2.63	✓
7	9:25 AM	1.676	0.2/0.6/0.8	0.805	0.8000	0.644	80	0.0385	1.0000	0.1310	0.14716	0.0193	2.63	✓
8	9:29 AM	1.859	0.2/0.6/0.8	0.759	0.2000	0.152	80	0.2937	1.0000	0.1000	0.13880	0.0139	1.89	✓
8	9:29 AM	1.859	0.2/0.6/0.8	0.759	0.6000	0.455	80	0.0733	1.0000	0.1000	0.13880	0.0139	1.89	✓
8	9:29 AM	1.859	0.2/0.6/0.8	0.759	0.8000	0.607	80	-0.0405	1.0000	0.1000	0.13880	0.0139	1.89	✓
9	9:32 AM	2.042	0.2/0.6/0.8	0.725	0.2000	0.145	80	0.3187	1.0000	0.1960	0.13267	0.0260	3.54	✓
9	9:32 AM	2.042	0.2/0.6/0.8	0.725	0.6000	0.435	80	0.2219	1.0000	0.1960	0.13267	0.0260	3.54	✓
9	9:32 AM	2.042	0.2/0.6/0.8	0.725	0.8000	0.580	80	0.0216	1.0000	0.1960	0.13267	0.0260	3.54	✓
10	9:36 AM	2.225	0.2/0.6/0.8	0.747	0.2000	0.149	80	0.3134	1.0000	0.2273	0.13657	0.0310	4.23	✓
10	9:36 AM	2.225	0.2/0.6/0.8	0.747	0.6000	0.448	80	0.2588	1.0000	0.2273	0.13657	0.0310	4.23	✓
10	9:36 AM	2.225	0.2/0.6/0.8	0.747	0.8000	0.597	80	0.0783	1.0000	0.2273	0.13657	0.0310	4.23	✓
11	9:39 AM	2.408	0.2/0.6/0.8	0.789	0.2000	0.158	80	0.3257	1.0000	0.2639	0.14437	0.0381	5.19	✓
11	9:39 AM	2.408	0.2/0.6/0.8	0.789	0.6000	0.474	80	0.2996	1.0000	0.2639	0.14437	0.0381	5.19	✓
11	9:39 AM	2.408	0.2/0.6/0.8	0.789	0.8000	0.632	80	0.1308	1.0000	0.2639	0.14437	0.0381	5.19	✓
12	9:43 AM	2.591	0.2/0.8	0.817	0.2000	0.163	80	0.3310	1.0000	0.2523	0.14939	0.0377	5.13	✓
12	9:43 AM	2.591	0.2/0.8	0.817	0.8000	0.653	80	0.1737	1.0000	0.2523	0.14939	0.0377	5.13	✓
13	9:46 AM	2.774	0.2/0.8	0.820	0.2000	0.164	80	0.3393	1.0000	0.2772	0.14995	0.0416	5.66	✓
13	9:46 AM	2.774	0.2/0.8	0.820	0.8000	0.656	80	0.2151	1.0000	0.2772	0.14995	0.0416	5.66	✓
14	9:48 AM	2.957	0.2/0.8	0.823	0.2000	0.165	80	0.3514	1.0000	0.3046	0.15050	0.0458	6.24	✓
14	9:48 AM	2.957	0.2/0.8	0.823	0.8000	0.658	80	0.2578	1.0000	0.3046	0.15050	0.0458	6.24	✓
15	9:51 AM	3.139	0.2/0.8	0.820	0.2000	0.164	80	0.3506	1.0000	0.3287	0.14995	0.0493	6.71	✓
15	9:51 AM	3.139	0.2/0.8	0.820	0.8000	0.656	80	0.3067	1.0000	0.3287	0.14995	0.0493	6.71	✓
16	9:53 AM	3.322	0.2/0.8	0.796	0.2000	0.159	80	0.3534	1.0000	0.2743	0.14549	0.0399	5.44	✓
16	9:53 AM	3.322	0.2/0.8	0.796	0.8000	0.636	80	0.1953	1.0000	0.2743	0.14549	0.0399	5.44	✓
17	9:56 AM	3.505	0.2/0.8	0.796	0.2000	0.159	80	0.3442	1.0000	0.3281	0.14549	0.0477	6.50	✓
17	9:56 AM	3.505	0.2/0.8	0.796	0.8000	0.636	80	0.3119	1.0000	0.3281	0.14549	0.0477	6.50	✓
18	9:58 AM	3.688	0.2/0.8	0.765	0.2000	0.153	80	0.3412	1.0000	0.3159	0.13991	0.0442	6.02	✓
18	9:58 AM	3.688	0.2/0.8	0.765	0.8000	0.612	80	0.2907	1.0000	0.3159	0.13991	0.0442	6.02	✓
19	10:01 AM	3.871	0.2/0.8	0.741	0.2000	0.148	80	0.3446	1.0000	0.3203	0.13545	0.0434	5.91	✓
19	10:01 AM	3.871	0.2/0.8	0.741	0.8000	0.593	80	0.2960	1.0000	0.3203	0.13545	0.0434	5.91	✓
20	10:03 AM	4.054	0.2/0.8	0.753	0.2000	0.151	80	0.3103	1.0000	0.3096	0.13768	0.0426	5.81	✓
20	10:03 AM	4.054	0.2/0.8	0.753	0.8000	0.602	80	0.3089	1.0000	0.3096	0.13768	0.0426	5.81	✓
21	10:06 AM	4.237	0.2/0.6/0.8	0.725	0.2000	0.145	80	0.2844	1.0000	0.3101	0.13267	0.0411	5.60	✓
21	10:06 AM	4.237	0.2/0.6/0.8	0.725	0.6000	0.435	80	0.3222	1.0000	0.3101	0.13267	0.0411	5.60	✓
21	10:06 AM	4.237	0.2/0.6/0.8	0.725	0.8000	0.580	80	0.3116	1.0000	0.3101	0.13267	0.0411	5.60	✓
22	10:09 AM	4.420	0.2/0.6/0.8	0.655	0.2000	0.131	80	0.2881	1.0000	0.3062	0.11984	0.0367	5.00	✓
22	10:09 AM	4.420	0.2/0.6/0.8	0.655	0.6000	0.393	80	0.3169	1.0000	0.3062	0.11984	0.0367	5.00	✓
22	10:09 AM	4.420	0.2/0.6/0.8	0.655	0.8000	0.524	80	0.3028	1.0000	0.3062	0.11984	0.0367	5.00	✓
23	10:13 AM	4.602	0.2/0.6/0.8	0.546	0.2000	0.109	80	0.2841	1.0000	0.2161	0.09978	0.0216	2.94	✓
23	10:13 AM	4.602	0.2/0.6/0.8	0.546	0.6000	0.327	80	0.2866	1.0000	0.2161	0.09978	0.0216	2.94	✓
23	10:13 AM	4.602	0.2/0.6/0.8	0.546	0.8000	0.436	80	0.0071	1.0000	0.2161	0.09978	0.0216	2.94	✓
24	10:17 AM	4.785	0.6	0.381	0.6000	0.229	80	0.1730	1.0000	0.1730	0.06968	0.0121	1.64	✓
25	10:18 AM	4.968	0.6	0.366	0.6000	0.219	80	0.0757	1.0000	0.0757	0.06689	0.0051	0.69	✓
26	10:20 AM	5.151	0.6	0.256	0.6000	0.154	80	-0.0347	1.0000	-0.0347	0.04682	-0.0016	-0.22	✓
27	10:21 AM	5.334	None	0.030	0.0000	0.000	0	0.0000	1.0000	-0.0347	0.00279	-0.0001	-0.01	✓



Discharge Measurement Summary

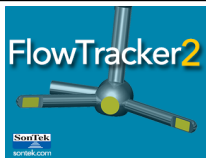
Site name WCanal7
Site number 02
Operator(s) VAllen
File name WestCanal_20230614_0907.ft
Comment

Quality Control Settings

Maximum depth change 50.00%
Maximum spacing change 100.00%
SNR threshold 10 dB
Standard error threshold 0.0100 m/s
Spike threshold 10.00%
Maximum velocity angle 20.0 deg
Maximum tilt angle 5.0 deg

Quality control warnings

St#	Time	Location (m)	Method	Depth (m)	%Depth	Measured Depth (m)	Warnings
1	9:07 AM	0.579	0.6	0.247	0.6000	0.148	Velocity Angle > QC
2	9:11 AM	0.762	0.6	0.360	0.6000	0.216	Velocity Angle > QC
3	9:12 AM	0.945	0.6	0.494	0.6000	0.296	Velocity Angle > QC
4	9:14 AM	1.128	0.2/0.6/0.8	0.543	0.2000	0.109	Velocity Angle > QC
4	9:14 AM	1.128	0.2/0.6/0.8	0.543	0.6000	0.326	Velocity Angle > QC
4	9:14 AM	1.128	0.2/0.6/0.8	0.543	0.8000	0.434	Velocity Angle > QC
5	9:18 AM	1.311	0.2/0.6/0.8	0.732	0.2000	0.146	Velocity Angle > QC
5	9:18 AM	1.311	0.2/0.6/0.8	0.732	0.6000	0.439	Velocity Angle > QC
5	9:18 AM	1.311	0.2/0.6/0.8	0.732	0.8000	0.585	Velocity Angle > QC
7	9:25 AM	1.676	0.2/0.6/0.8	0.805	0.2000	0.161	Velocity Angle > QC
7	9:25 AM	1.676	0.2/0.6/0.8	0.805	0.6000	0.483	Velocity Angle > QC
7	9:25 AM	1.676	0.2/0.6/0.8	0.805	0.8000	0.644	Velocity Angle > QC
8	9:29 AM	1.859	0.2/0.6/0.8	0.759	0.2000	0.152	Velocity Angle > QC
8	9:29 AM	1.859	0.2/0.6/0.8	0.759	0.6000	0.455	Velocity Angle > QC
8	9:29 AM	1.859	0.2/0.6/0.8	0.759	0.8000	0.607	Velocity Angle > QC
9	9:32 AM	2.042	0.2/0.6/0.8	0.725	0.2000	0.145	Velocity Angle > QC
9	9:32 AM	2.042	0.2/0.6/0.8	0.725	0.6000	0.435	Velocity Angle > QC
9	9:32 AM	2.042	0.2/0.6/0.8	0.725	0.8000	0.580	Velocity Angle > QC
10	9:36 AM	2.225	0.2/0.6/0.8	0.747	0.2000	0.149	Velocity Angle > QC
10	9:36 AM	2.225	0.2/0.6/0.8	0.747	0.6000	0.448	Velocity Angle > QC
10	9:36 AM	2.225	0.2/0.6/0.8	0.747	0.8000	0.597	Velocity Angle > QC
11	9:39 AM	2.408	0.2/0.6/0.8	0.789	0.2000	0.158	Velocity Angle > QC
11	9:39 AM	2.408	0.2/0.6/0.8	0.789	0.6000	0.474	Velocity Angle > QC
11	9:39 AM	2.408	0.2/0.6/0.8	0.789	0.8000	0.632	Velocity Angle > QC
23	10:13 AM	4.602	0.2/0.6/0.8	0.546	0.2000	0.109	Boundary Interference
23	10:13 AM	4.602	0.2/0.6/0.8	0.546	0.6000	0.327	Boundary Interference
23	10:13 AM	4.602	0.2/0.6/0.8	0.546	0.8000	0.436	Boundary Interference
26	10:20 AM	5.151	0.6	0.256	0.6000	0.154	Velocity Angle > QC
27	10:21 AM	5.334	None	0.030	0.0000	0.000	Water Depth > QC



Discharge Measurement Summary

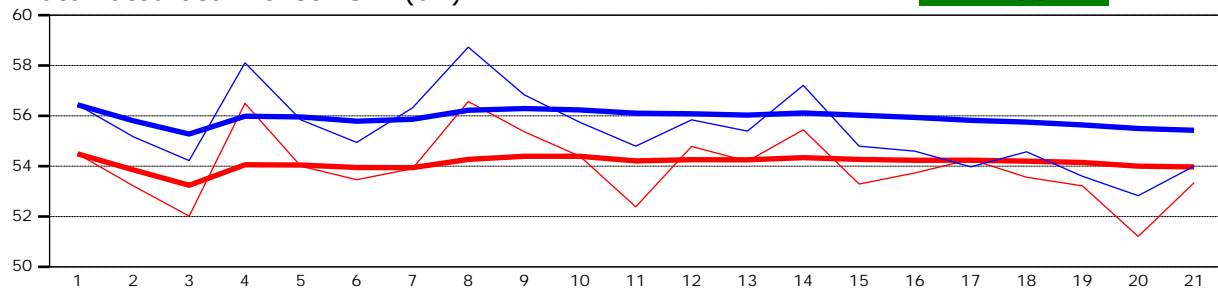
Site name WCanal7
Site number 02
Operator(s) VAllen
File name WestCanal_20230614_0907.ft
Comment

Beam 1	
Beam 2	

Automated beam check Start time 6/14/2023 9:07:01 AM

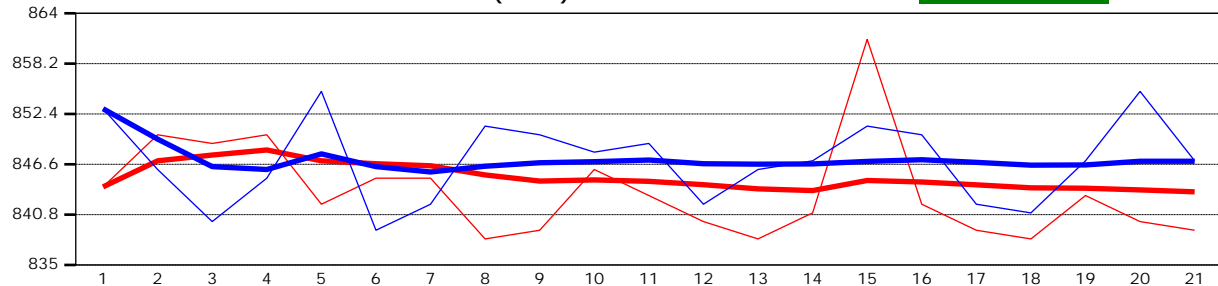
Automated beam check SNR(dB)

PASS



Automated beam check Noise level(cnts)

PASS



Automated beam check Quality control warnings

No quality control warnings



Discharge Measurement Summary

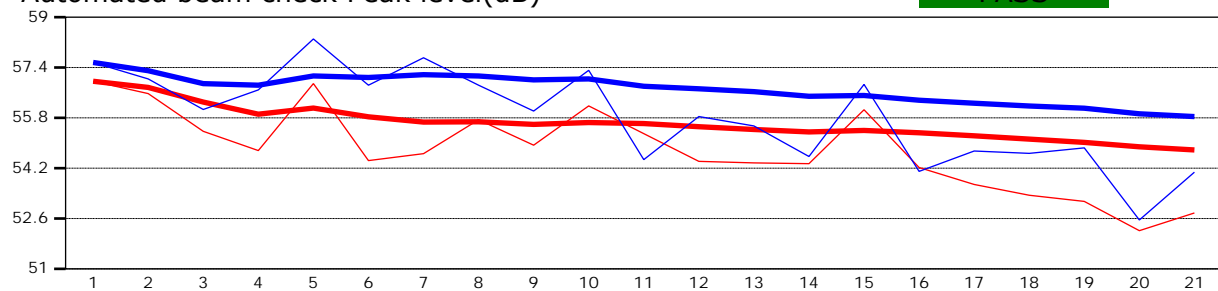
Site name WCanal7
Site number 02
Operator(s) VAllen
File name WestCanal_20230614_0907.ft
Comment

Beam 1	
Beam 2	

Automated beam check Start time 6/14/2023 9:07:01 AM

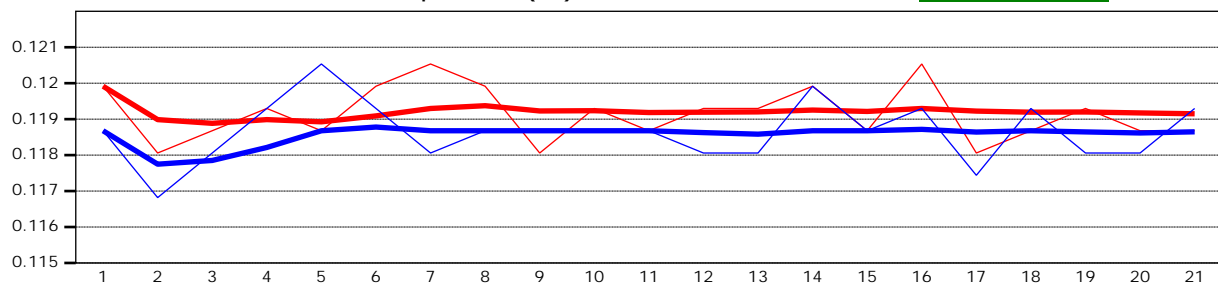
Automated beam check Peak level(dB)

PASS



Automated beam check Peak position(m)

PASS



Automated beam check Quality control warnings

No quality control warnings